

THE WATER TOWER

DEMO DAY

2022

WELCOME TO THE WATER TOWER

GRAND OPENING & INAUGURAL DEMO DAY

April 22, 2022 | 8:30 AM - 3:00 PM

SCHEDULE

8:00 AM	Check in
8:30 AM	Exhibits Open
9:00 AM - 2:15 PM	Lightning Talks
11:20 AM - 1:30 PM	VIP Lunch (Invitation Only)
11:30 AM - 1:00 PM	Food Trucks for All Attendees
1:00 PM - 3:00 PM	Exhibits Open
1:30 PM	Bucket Challenge

LIGHTNING TALKS

Board Room (2nd Floor)	Multi-Purpose Room (1st floor)
9:00 Global Water Works	8:45 Carollo
9:45 120Water	9:15 Wade Trim
10:30 AdEdge/Chart Water	9:45 Garver
11:15 Onsyte	10:15 Innovative Utility Q&A with Hillsborough County & San Luis Obispo
1:45 Aquasmart	

TRAINING EXHIBITS

Interested in training opportunities at TWT? Explore the **Demo Area** for a sneak peek of our hands-on training programming for backflow prevention, pipes and valves, stormwater, emergency power services, heavy equipment, and field safety.

CONTROL ROOM EXHIBITS

8:30 Siemens
10:00 Black & Veatch
10:30 Kamstrup
11:00 Mueller
1:30 Ferguson/Voda::ai
2:00 Black & Veatch
2:30 McWane

Interested in smart technologies? Check out these demos!

DEMO DAY SPONSORS

VIP Lunch Sponsor

kamstrup

Lunch Sponsor

ARCADIS

Full Scale Sponsors

Consolidated
PIPE & SUPPLY COMPANY, INC.

FERGUSON
WATERWORKS

Pilot Scale Sponsors

AQAIX

idt

JEA

Kimley»Horn

SP
SUSTAINABILITY
PARTNERS

Bench Scale Sponsors

ams aqueous metrology systems

ARDURRA

120Water™

EMPOWERING
PUMPS & EQUIPMENT

TRUEPANI

TERC

SUSTAINING PARTNERS

carollo

GARVER

Gwinnett

kamstrup

WADE TRIM

LAB EXHIBITS

Analytical Lab

Hach Company
Metrohm

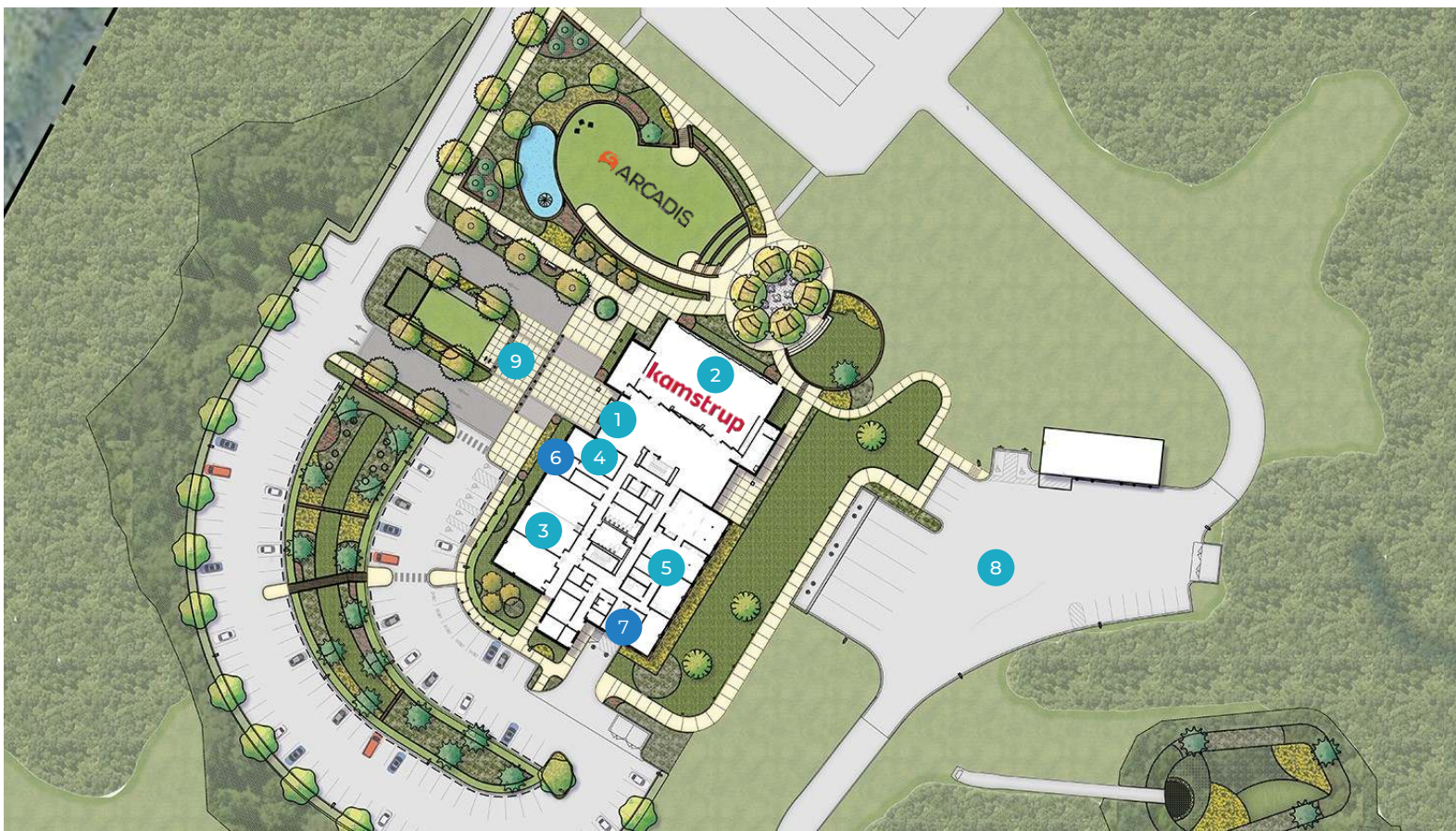
Experimental Lab

Graco
Motion Industries
Shimadzu



BECOME A FRIEND

We are excited to offer a Friends of The Water Tower membership to individuals! Learn more at theh2otower.org.



FIRST FLOOR

1 CHECK IN

2 MULTIPURPOSE ROOM

Lightning Talks
VIP Lunch (Invitation Only)

3 EXHIBITOR AREA

120Water
Abyss Solutions
Aqua Metrology Systems
Arcadis
Ardurra
Carollo
Endress Hauser/Carotek
Ferguson/Voda:ai
GeoHydro Engineers
Global Water Works
GWWI
Kimley Horn
Slater Infrastructure Group
Smart Water Analytics
Southern Valve & Pump
Sustainability Partners
TruePani
Wade Trim

4 CONTROL ROOM

Black & Veatch
Kamstrup
McWane
Mueller
Siemens

5 LABS

Graco Inc
Hach Company
Metrohm
Motion Industries
Shimadzu

SECOND FLOOR

6 BOARD ROOM

Lightning Talks

7 CO-WORKING SPACE EXHIBIT

4Earth's Smart Water Experience

OUTDOOR

8 DEMO AREA

Consolidated Pipe & Supply
Flo Water
Gwinnett County DWR
Harry Warren
Heavy Equipment Colleges of America
Liqua Flow Pump Company
Prime Power
TERC
Watts

9 FOOD TRUCKS

Available for all attendees
Seating available at The Basin lawn or at The Water Cooler

Need a quiet space to work or meet? Check out our co-working space on the 2nd floor!